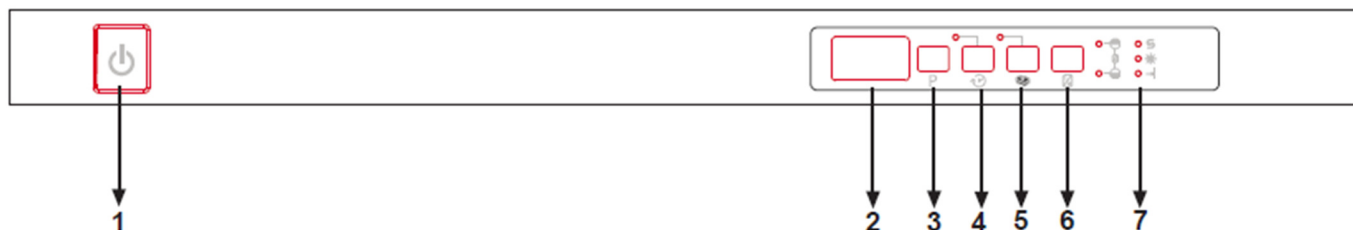


DISHWASHER GRAM

Open the water connection from the kitchen tap (on/off switcher) before starting the dishwasher. Close the connection after program has finished



CONTROL PANEL



1.) Power On/Off Button

When the Power On/Off button is pressed, end of program indicator starts lighting.

2.) Program Display

Program display indicates the times of the programs and the remaining time during the program flow. You can also follow-up the selected programs by this display.

3.) Program selection button

With the program selector button, you can select a suitable program for your dishes.

4.) Delay Timer Button

You can delay the start time of a selected program for 1-219 hours by pressing the delay timer button of your machine. When you press the delay timer button, delay "1h" appears on the program display. If you continue pressing the delay timer button, 1-2... 19 will be displayed respectively. You can activate the delayed start by selecting the delay time and the desired washing program with the *program selection* button. It is also possible to select the program first and the delayed start afterwards. If you want to change or cancel the delayed start time, you can adjust it with the delay timer button; it will be activated according to the last value entered.

5.) Tablet Detergent Button (3 in 1 button)

Press tablet detergent button when you use combined detergents that include salt and rinse aid.

6.) 1/2 Half Load Button

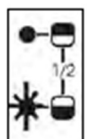
Using the function 1/2, three sorts of washing up can be done those being lower basket, upper basket and both baskets.



If you have little amount of dishes in your machine and if you have to wash them, you can also activate the semi-filling function in some of the programs additionally. If you have dishes in both baskets, press the key 1/2 and select the position in which both lamps are highlighted.



If you have dishes only in the upper basket, press the key 1/2 and select the position in which the upper lamp is illuminated. Thus, washing up shall be done only on the upper basket of your machine. No dishes should certainly be available in the lower basket while using this feature.



If you have dishes only in the lower basket, press the key 1/2 and select the position in which the lower lamp is illuminated. Thus, washing up shall be done only on the lower basket of your machine. In using this feature, make sure that there are no dishes in the upper basket.

Note : If you have used an extra feature on the latest washing program, this feature will remain active also on the next washing program. If you do not want to use this feature on the newly selected washing program, press the selected feature button again, and check that the lamp on the button goes off.

Note: When you select an incompatible program with the half load button, a buzzer sound is heard which indicates that the selected option is not compatible.

7.) Salt Lack Warning indicator

In order to see whether softening salt in your machine is sufficient or not, check salt lack warning light on the display. When salt light warning light starts coming on, you need to fill in the salt chamber.

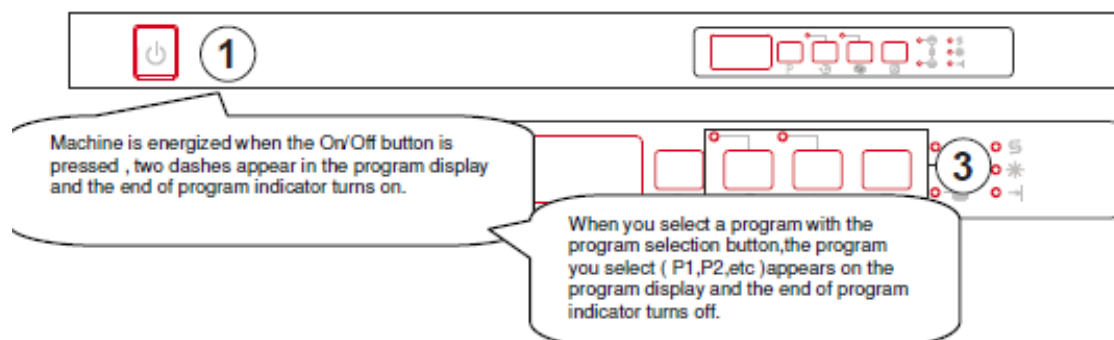
Rinse aid Lack Warning indicator

In order to check that there is sufficient rinse aid in your machine check rinse aid lack warning light on the display. When rinse aid warning light starts coming on, fill in rinse aid chamber.

End of Program Indicator

End of program indicator on the control panel turns on when the selected washing program is completed. Your machine also gives a buzzer sound for "5 times" when the program is completed.

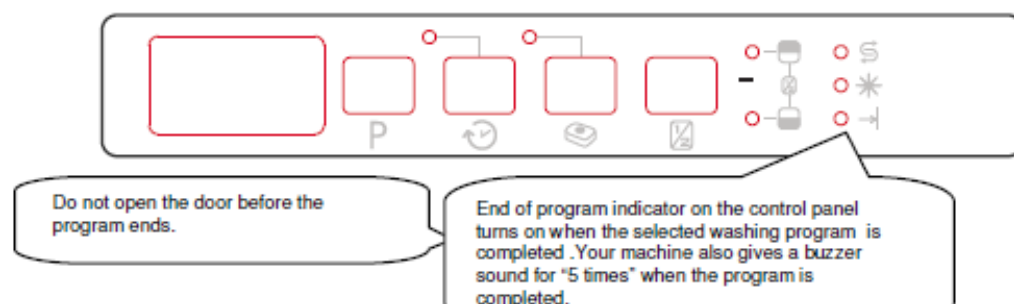
Switching on the machine



1. Press the Power On/Off key.
2. Select the program suiting your dishes via the Program Selection button.
3. If you prefer or wish to prefer, you can choose additional function.
4. Close door. The program starts automatically.

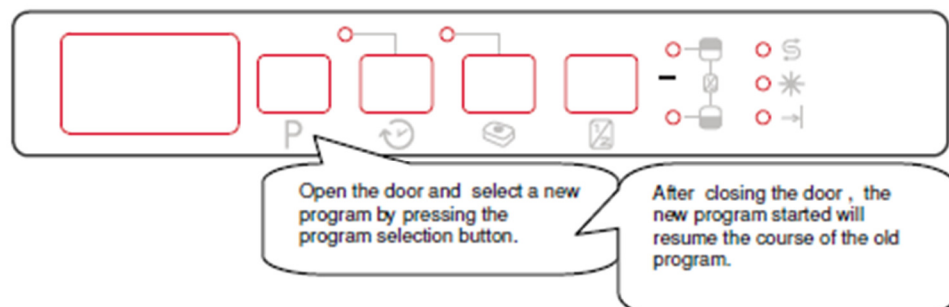
Note: If you decide not to start the machine after selecting the program, just press the on/off button. Your machine will become ready for the new program selection when you press on/off button again. You can select the new program by pressing the program selection button.

Program follow-up



Changing a programme

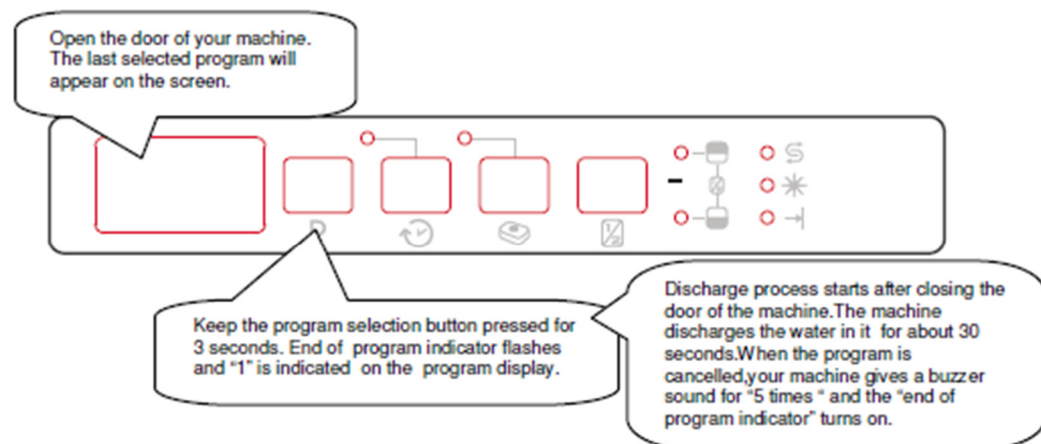
If you would like to change programs while a washing program is continuing.



Note: When the door of the machine is opened in order to stop the washing program before it is completed first open the door slightly in order to avoid water spillage.

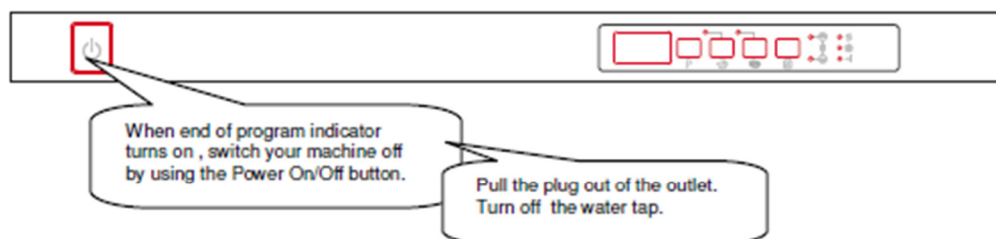
Changing a programme with resetting

If you would like to cancel a program while a washing program is resumed



Note: When the door of the machine is opened in order to stop the washing program before it is completed first open the door slightly in order to avoid water spillage.

Switching the machine off



Note: After the buzzer sound which indicates the end of the program when the washing program comes to an end (end indicator light is on), you can leave the door of your machine ajar in order to hasten the drying.

Note: If the machine door opens during washing or the power is cut off, the machine will go on to the program in case the door is shut or the power is back.

Note: If energy is cut or machine door is opened during drying process, program is terminated. Your machine becomes ready for new program selection.

